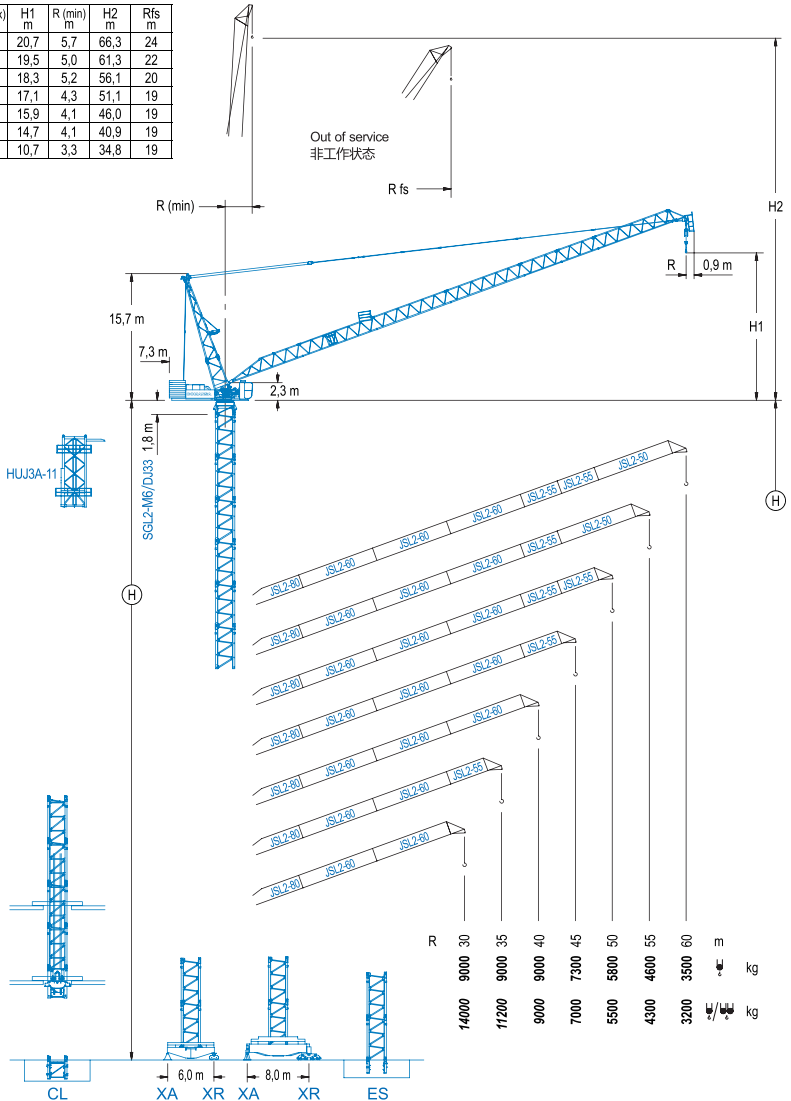


R (max) m	H1 m	R (min) m	H2 m	Rfs m
60	20,7	5,7	66,3	24
55	19,5	5,0	61,3	22
50	18,3	5,2	56,1	20
45	17,1	4,3	51,1	19
40	15,9	4,1	46,0	19
35	14,7	4,1	40,9	19
30	10,7	3,3	34,8	19



LCL Series

LOAD CHART / 载荷曲线

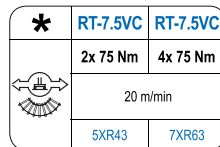
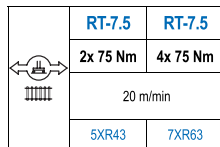
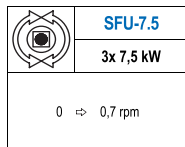
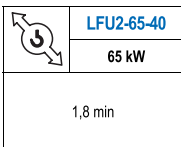
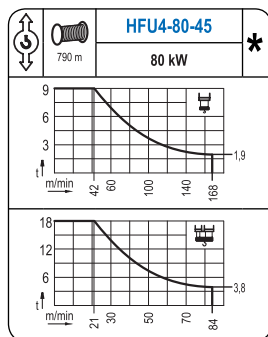
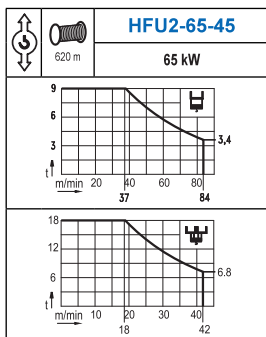
R (m)	ψ	RCmax (m)	20	25	30	35	40	45	50	55	60	⇄(m) ⇄(kg)
60		36,0				9000	7400	5990	4960	4160	3500	
55		37,0				9000	7910	6510	5460	4600		
50		38,0				9000	8310	6910	5800			
45		39,5				9000	8830	7300				
40		40,0					9000					
35		35,0						9000				
30		30,0			9000							

R (m)	ψ/ψ ₀	RCmax (m)	15	20	25	30	35	40	45	50	55	60	⇄(m) ⇄(kg)
60		18,0	18000	15260	10970	8480	6850	5700	4850	4190	3650	3200	
55		18,5	18000	16170	12010	9490	7780	6560	5630	4900	4300		
50		19,1	18000	16990	12900	10330	8560	7180	6290	5500			
45		20,0		18000	13890	11250	9410	8050	7000				
40		21,1		18000	15000	12310	10420	9000					
35		22,4		18000	16020	13200	11200						
30		24,0		18000	17200	14000							

Valid data up to 80 m of tower height. Additional heights on request.
此数据仅适用于塔机高度80m以下，其他高度请咨询。

MECHANISMS / 机构

LCL Series

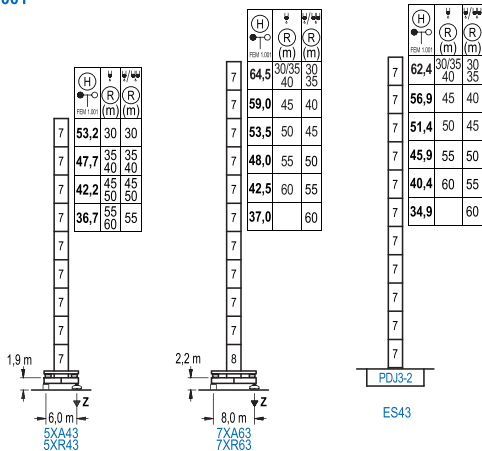


POWER / 功率				Operating voltage / 工作电压	Required power 需要功率
Hoist / 起升机构	luffing / 仰臂机构	Stewing / 回转机构	Travel / 行走机构		
HFU2-65-45	LFU2-65-40	(3x) SFU-7.5	(2x) RT-7.5	400 V	261 kVA
HFU4-80-45				3ph	291 kVA
				50 Hz	

Optional
选项

*

FEM 1.001



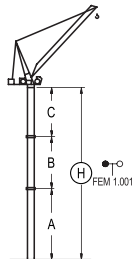
n°	Ref.	∅	h
7	DJ33	2,5	5,5
8	TDJ34	2,5	5,5

1x DJ33 = 1x DJ33M

R max. 最大压力	In operation 工作状态	5XR43..... 130 t 7XR63..... 130 t
	Out of service 非工作状态	5XR43..... 138 t 7XR63..... 153 t

BRACED CRANE / 外附着塔机

FEM 1.001



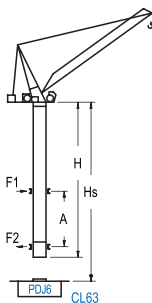
R (m)	∅	60 / 55	50 / 45	40 / 35	30
A max		23,9	29,4	34,9	40,4
A min		23,9	23,9	23,9	23,9
B max		16,5	22,0	27,5	33,0
B min		16,5	16,5	16,5	16,5
C max		29,3	34,8	40,3	45,8
H max		53,2	68,7	84,2	99,7

R (m)	∅	60	55	50	45	40/35/30
A max		24,2	29,7	35,2	40,7	46,2
A min		24,2	24,2	24,2	24,2	24,2
B max		16,5	22,0	27,5	33,0	33,0
B min		16,5	16,5	16,5	16,5	16,5
C max		29,3	34,8	40,3	45,8	45,8
H max		53,5	70,0	86,5	103,0	119,5

R (m)	∅	60	55	50	45	40/35/30
A max		22,1	27,6	33,1	38,6	44,1
A min		22,1	22,1	22,1	22,1	22,1
B max		16,5	22,0	27,5	33,0	33,0
B min		16,5	16,5	16,5	16,5	16,5
C max		29,3	34,8	40,3	45,8	45,8
H max		51,4	67,9	84,4	100,9	117,4

INTERNAL CLIMBING CRANE / 内爬塔机

FEM 1.001



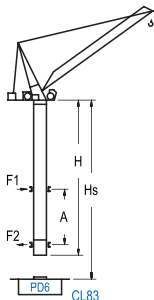
H (m)	∅	∅	∅	Hs < 600 m
FEM 1.001	(R) (m)	(R) (m)	(R) (m)	A max (m) A min (m)
71,6 (7x DJ33 + TDJ34 + 4x DJ34A + CLDJ34A-24)	30	30	24,6	12,0
66,1 (6x DJ33 + TDJ34 + 4x DJ34A + CLDJ34A-24)	40	35	24,6	12,0
60,6 (5x DJ33 + TDJ34 + 4x DJ34A + CLDJ34A-24)	50	40	24,6	11,0
55,1 (4x DJ33 + TDJ34 + 4x DJ34A + CLDJ34A-24)	55	45	21,9	11,0
49,6 (3x DJ33 + TDJ34 + 4x DJ34A + CLDJ34A-24)	60		19,1	11,0
44,1 (2x DJ33 + TDJ34 + 4x DJ34A + CLDJ34A-24)	55		16,4	9,0
38,6 (DJ33 + TDJ34 + 4x DJ34A + CLDJ34A-24)	60		13,6	8,0

n°	Ref.	∅	h
7	DJ33	2,5	5,5
8	TDJ34	2,5	5,5
20	DJ34A	2,5	5,5
21	CLDJ34A-24	2,5	3,8

1x DJ33 = 1x DJ33M

Other wind zones or additional hook heights on request
其他风区或另外的吊钩高度请咨询

FEM 1.001



 FEM 1.001	$\frac{W}{H}$		Hs < 600 m	
	$\frac{W}{H}$ (R)(m)	$\frac{W}{H}$ (R)(m)	A max (m)	A min (m)
82,6 (8x DJ33 + TDJ34 + TDJ36B + 4x DJ36A + CLDJ36A-28)	30	30	24,6	9,0
77,1 (7x DJ33 + TDJ34 + TDJ36B + 4x DJ36A + CLDJ36A-28)	35 40	35	24,6	10,0
71,6 (6x DJ33 + TDJ34 + TDJ36B + 4x DJ36A + CLDJ36A-28)	45	40	24,6	9,0
66,1 (5x DJ33 + TDJ34 + TDJ36B + 4x DJ36A + CLDJ36A-28)	50	45	24,6	9,0
60,6 (4x DJ33 + TDJ34 + TDJ36B + 4x DJ36A + CLDJ36A-28)	55	50	24,6	8,0
55,1 (3x DJ33 + TDJ34 + TDJ36B + 4x DJ36A + CLDJ36A-28)			21,9	7,0
49,6 (2x DJ33 + TDJ34 + TDJ36B + 4x DJ36A + CLDJ36A-28)	60	55	19,1	7,0
44,1 (DJ33 + TDJ34 + TDJ36B + 4x DJ36A + CLDJ36A-28)		60	16,4	7,0

n°	Ref.	a	h
7	DJ33	2,5	5,5
8	TDJ34	2,5	5,5
10	TDJ36B	2,5	5,5
12	DJ36A	2,5	5,5
13	CLDJ36A-28	2,5	3,8

1x DJ33 = 1x DJ33M

Other wind zones or additional hook heights on request
 其他风区或另外的吊钩高度请咨询