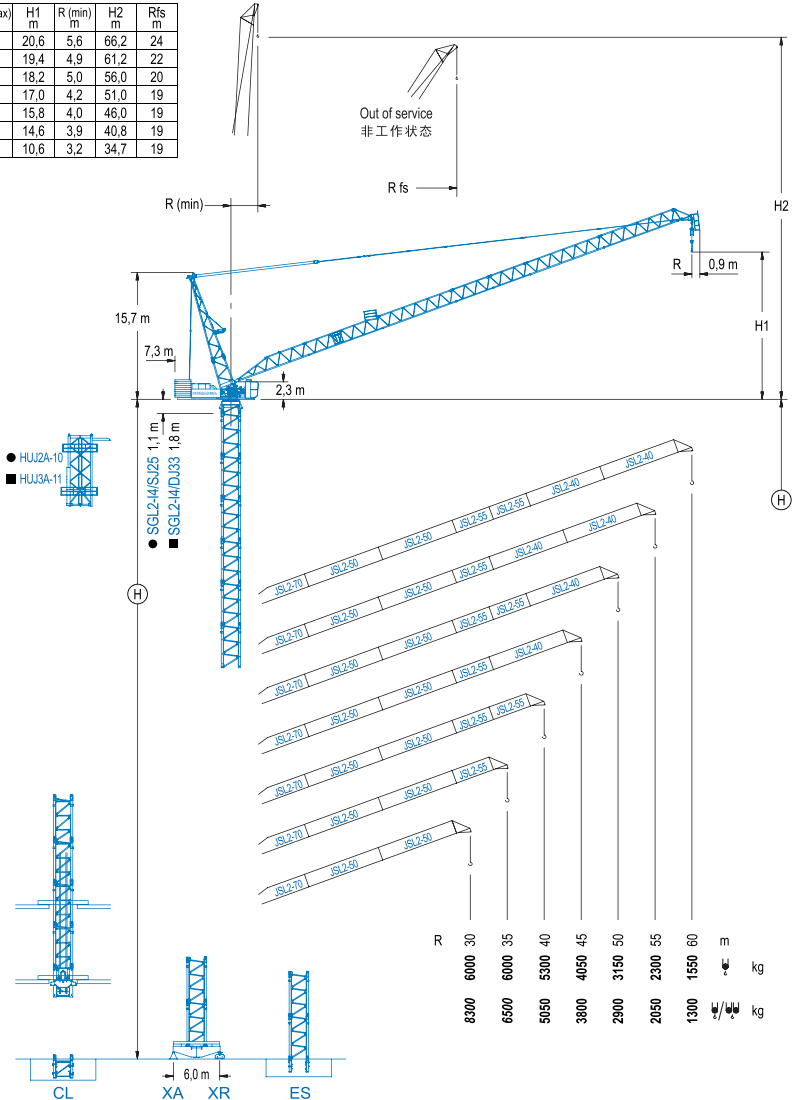


R (max) m	H1 m	R (min) m	H2 m	Rfs m
60	20,6	5,6	66,2	24
55	19,4	4,9	61,2	22
50	18,2	5,0	56,0	20
45	17,0	4,2	51,0	19
40	15,8	4,0	46,0	19
35	14,6	3,9	40,8	19
30	10,6	3,2	34,7	19



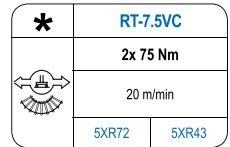
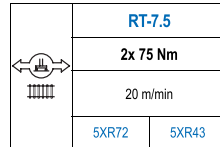
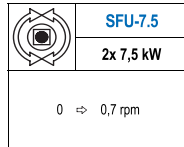
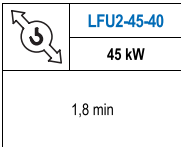
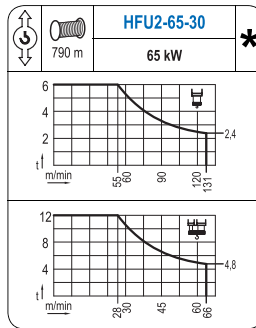
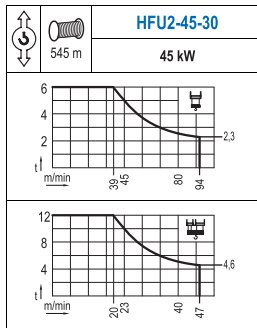
Load Chart / 载荷曲线

R (m)	ψ	RCmax (m)	10	15	20	25	30	35	40	45	50	55	60	ψ (m) ↓(kg)
60		28,5				6000	5460	4140	3280	2670	2210	1850	1550	
55		32,5					6000	5250	4140	3360	2780	2300		
50		35,5						6000	4820	3880	3150			
45		36,5						6000	5080	4050				
40		37,6						6000	5300					
35		35,0						6000						
30		30,0					6000							

R (m)	ψ	RCmax (m)	10	15	20	25	30	35	40	45	50	55	60	ψ (m) ↓(kg)
60		13,5	12000	10140	6590	4800	3710	2980	2460	2070	1760	1510	1300	
55		20,2			12000	7950	5780	4460	3580	2940	2450	2050		
50		21,0			12000	8870	6600	5170	4200	3470	2900			
45		21,4			12000	9370	7090	5620	4590	3800				
40		22,3			12000	10120	7750	6190	5050					
35		23,4			12000	10850	8260	6500						
30		23,5			12000	10950	8300							

Valid data up to 80 m of tower height. Additional heights on request.
此数据仅适用于塔机高度80m以下，其他高度请咨询。

Mechanisms / 机构

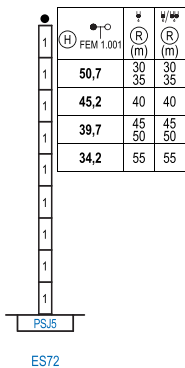
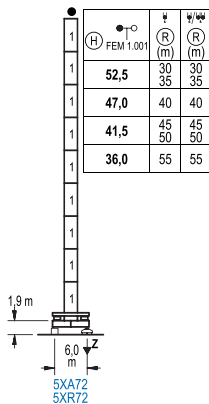


POWER / 功率				Operating voltage / 工作电压	Required power 需要功率
Hoist / 起升机构	Luffing / 仰臂机构	Slewing / 回转机构	Travel / 行走机构		
HFU2-45-30	LFU2-45-40	(2x) SFU-7.5	(2x) RT-7.5	400 V 3ph 50 Hz	180 kVA
HFU2-65-30					220 kVA

Optional
选项

*

FEM 1.001

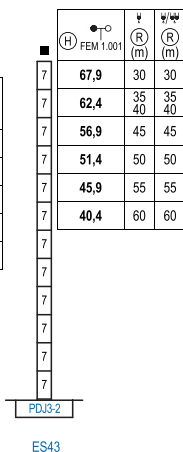
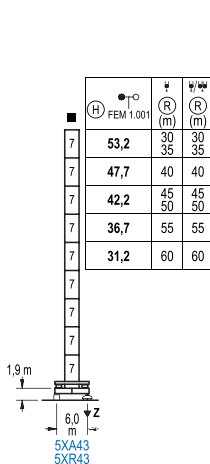


n°	Ref.	∅	h
1	SJ25	2,0	5,5

1xSJ25 = 1xSJ25M

R max. 最大压力	In operation 工作状态	5XR72..... 114 t
	Out of service 非工作状态	5XR72..... 127 t

FEM 1.001

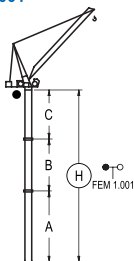


n°	Ref.	∅	h
7	DJ33	2,5	5,5

R max. 最大压力	In operation 工作状态	5XR43..... 115 t
	Out of service 非工作状态	5XR43..... 137 t

Other wind zones or additional hook heights on request
其他风区或另外的吊钩高度请咨询

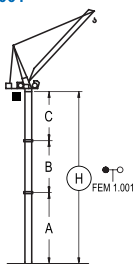
FEM 1.001



5XA72					
R	ψ	55	50 / 45	40	35 / 30
(m)	ψ/ψ	55	50 / 45	40	35 / 30
A max		23,9	29,4	34,9	40,4
A min		23,9	29,4	23,9	23,9
B max	-	16,5	-	22,0	-
B min		16,5	16,5	16,5	27,5
C max	28,6	28,6	34,1	34,1	34,1
H max	52,5	69,0	63,5	85,5	69,0
				91,0	80,0
				102,0	

ES72					
R	ψ	55	50 / 45	40	35 / 30
(m)	ψ/ψ	55	50 / 45	40	35 / 30
A max		22,1	27,6	33,1	38,6
A min		22,1	27,6	22,1	22,1
B max	-	16,5	-	22,0	-
B min		16,5	16,5	16,5	27,5
C max	28,6	28,6	34,1	34,1	34,1
H max	50,7	67,2	61,7	83,7	67,2
				89,2	78,2
				100,2	

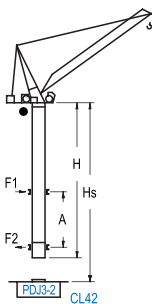
FEM 1.001



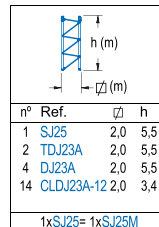
5XA43						
R	ψ	60	55	50 / 45	40	35 / 30
(m)	ψ/ψ	60	55	50 / 45	40	35 / 30
A max		18,4	23,9	29,4	34,9	40,4
A min		18,4	23,9	23,9	23,9	23,9
B max	-	16,5	-	22,0	-	33,0
B min		16,5	16,5	16,5	16,5	16,5
C max	29,3	29,3	34,8	34,8	40,3	40,3
H max	47,7	64,2	58,7	80,7	69,7	97,2
				75,2	102,7	86,2
				113,7		

ES43							
R	ψ	60	55	50	45	40 / 35	30
(m)	ψ/ψ	60	55	50	45	40 / 35	30
A max		27,6	33,1	38,6	44,1	49,6	55,1
A min		22,1	22,1	22,1	22,1	22,1	22,1
B max	-	16,5	-	22,0	-	33,0	-
B min		16,5	16,5	16,5	16,5	16,5	38,5
C max	29,3	29,3	34,8	34,8	40,3	40,3	45,8
H max	56,9	73,4	67,9	89,9	78,9	100,9	89,9
				117,4	95,4	128,4	106,4
				144,9			

FEM 1.001



H	ψ	ψ/ψ	Hs < 600 m	
			A max (m)	A min (m)
59,5 (5x SJ25 + TDJ23A + 4x DJ23A + CLDJ23A-12)	30	30	25,0	9,0
54,0 (4x SJ25 + TDJ23A + 4x DJ23A + CLDJ23A-12)	35 40	35 40	22,3	9,0
48,5 (3x SJ25 + TDJ23A + 4x DJ23A + CLDJ23A-12)	45	45	19,6	9,0
43,0 (2x SJ25 + TDJ23A + 4x DJ23A + CLDJ23A-12)	50	50	16,8	8,0
37,5 (SJ25 + TDJ23A + 4x DJ23A + CLDJ23A-12)	55	55	14,1	8,0
32,0 (TDJ23A + 4x DJ23A + CLDJ23A-12)	60	60	11,4	8,0



Other wind zones or additional hook heights on request
其他风区或另外的吊钩高度请咨询