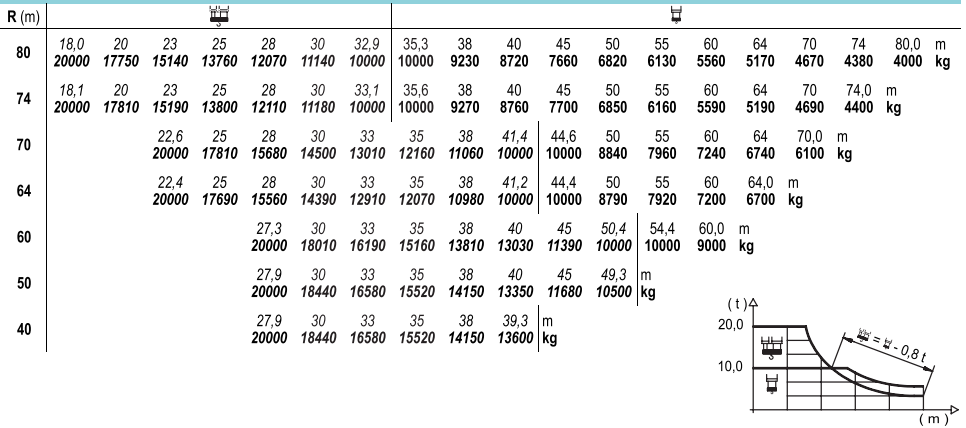
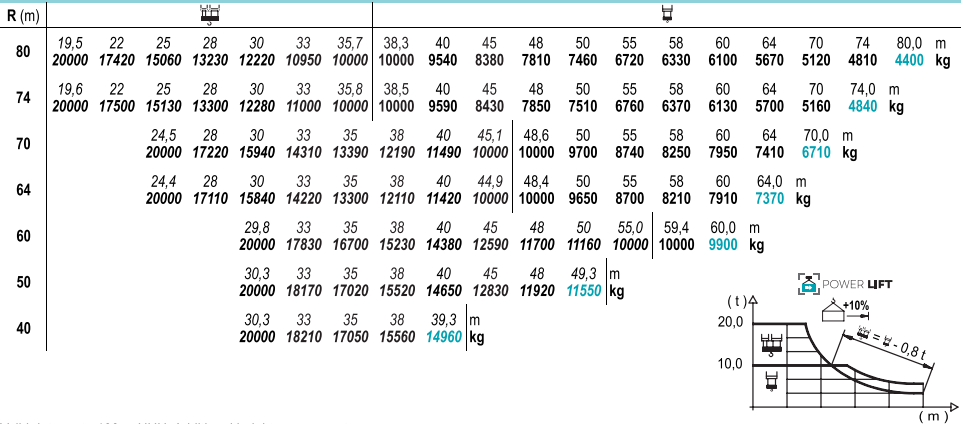


Load Chart / 载荷曲线

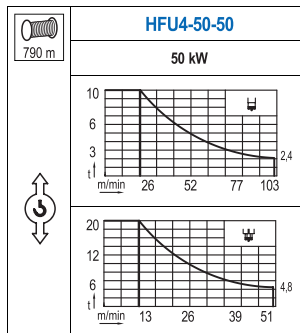


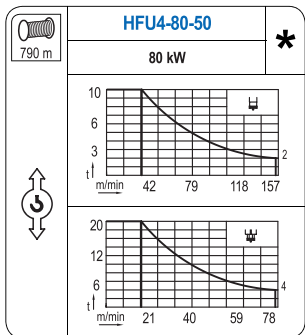
Load Chart Powerlift / 载荷曲线 Powerlift



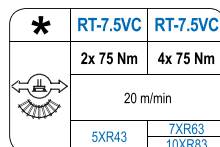
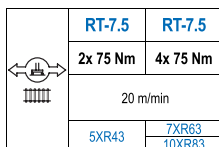
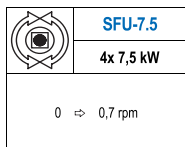
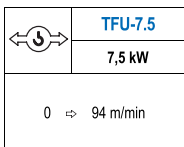
Valid data up to 100 m HUH. Additional heights on request.
此数据仅适用于吊钩高度100m以下，其他高度请咨询。

Mechanisms / 机构





For mechanisms with high drum capacity, request wire rope loads deduction.
使用大容量机构，起升载荷需考虑扣除钢丝绳的重量。



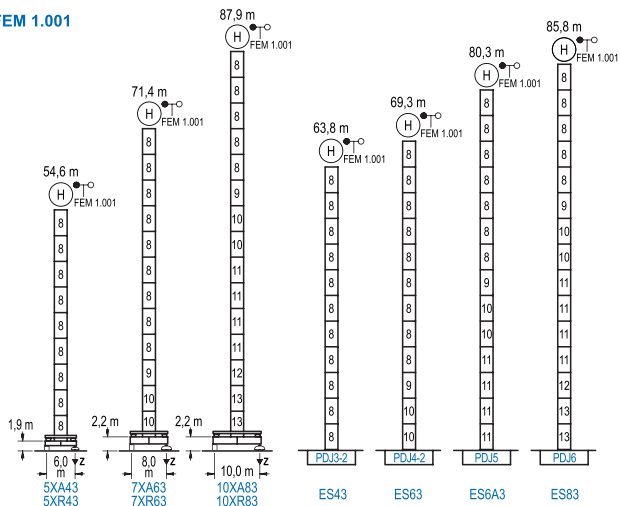
POWER / 功率				Operating voltage / 工作电压	Required power 需要功率
Hoist / 起升机构	Trolley / 变幅机构	Slewing / 回转机构	Travel / 行走机构		
HFU4-50-50	TFU-7.5	(4x) SFU-7.5	(2x) RT-7.5	400 V	160 kVA
HFU4-80-50			(4x) RT-7.5	300 50 Hz	220 kVA

Optional 选项
*

Heights Under Hook / 吊钩以下高度

Ø 2.5 m

FEM 1.001

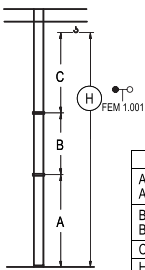


n°	Ref.	h	h
8	DJ33	2.5	5.5
9	TDJ34	2.5	5.5
10	DJ34	2.5	5.5
11	DJ35	2.5	5.5
12	TDJ36B	2.5	5.5
13	DJ36	2.5	5.5

R max. 最大压力	In operation 工作状态	5XR43..... 136 t 7XR63..... 125 t 10XR83..... 133 t
	Out of service 非工作状态	5XR43..... 102 t 7XR63..... 141 t 10XR83..... 188 t

Other wind zones or additional hook heights on request
其他风区或另外的吊钩高度请咨询

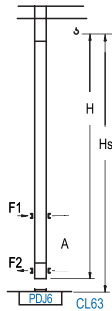
FEM 1.001



	5XA43	7XA63	10XA83
A max	40,4	57,2	73,7
A min	23,9	24,2	62,7
B max	-	33,0	-
B min	33,0	16,5	33,0
C max	52,7	47,2	47,2
C min	47,2	47,2	47,2
H max	93,1	120,6	104,4
H min	137,4	120,9	153,9

	ES43	ES63	ES6A3	ES83
A max	49,6	55,1	66,1	71,6
A min	22,1	22,1	44,1	60,6
B max	-	33,0	-	33,0
B min	33,0	16,5	33,0	16,5
C max	47,2	47,2	47,2	47,2
C min	47,2	47,2	47,2	47,2
H max	96,8	129,8	102,3	135,3
H min	113,3	146,3	118,8	151,8

FEM 1.001

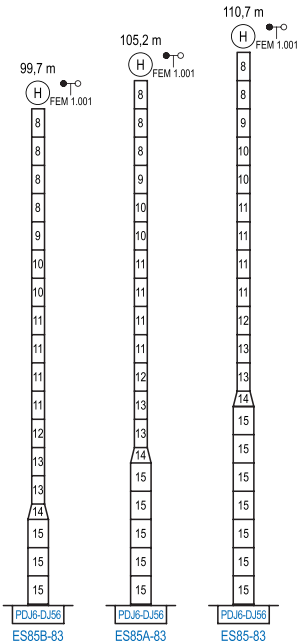


FEM 1.001	Hs < 400 m	
	A max (m)	A min (m)
62.0 m 5x DJ33+TDJ34 + 4x DJ34A+CLDJ34A-24	21,9	10,0
56.5 m 4x DJ33+TDJ34 + 4x DJ34A+CLDJ34A-24	19,1	8,0
51.0 m 3x DJ33+TDJ34 + 4x DJ34A+CLDJ34A-24	16,4	8,0

n°	Ref.	h	h
8	DJ33	2,5	5,5
9	TDJ34	2,5	5,5
20	DJ34A	2,5	5,5
21	CLDJ34A-24	2,5	3,8

Other wind zones or additional hook heights on request
其他风区或另外的吊钩高度请咨询

FEM 1.001



n°	Ref.	h	h
8	DJ33	2,5	5,5
9	TDJ34	2,5	5,5
10	DJ34	2,5	5,5
11	DJ35	2,5	5,5
12	TDJ36B	2,5	5,5
13	DJ36	2,5	5,5
14	TDJ56DJ36	4,0	3,0
15	DJ56	4,0	5,5

Other wind zones or additional hook heights on request
其他风区或另外的吊钩高度请咨询