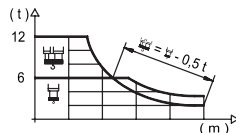


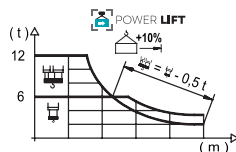
### Load Chart / 载荷曲线

R (m)	HUU										H																																			
65	14,1	18	20	22	25,3	26,9	28	30	32	35	37	40	42	45	47	50	52	55	57	60	62	65,0	m	12000	8990	7940	7090	6000	6000	5750	5320	4950	4470	4190	3840	3620	3340	3180	2960	2820	2640	2530	2370	2280	2150	kg
60	15,6	18	20	22	24	26	27,9	29,9	32	35	37	40	42	45	47	50	52	55	57	60,0	m	12000	10090	8920	7980	7200	6540	6000	6000	5570	5040	4730	4330	4100	3780	3600	3350	3200	2990	2870	2700	kg				
55	17,1	18	20	22	24	26	28	30,9	33,3	35	37	40	42	45	47	50	52	55,0	m	12000	11330	10040	8980	8120	7380	6760	6000	5680	5340	4890	4630	4280	4070	3800	3630	3400	kg									
50	18,6	22	24	26	28	30	32	33,6	36,4	40	42	45	47	50,0	m	12000	9890	8940	8150	7470	6880	6370	6000	6000	5400	5110	4730	4500	4200	kg																
45	19,1	22	24	26	28	30	32	34,6	37,5	40	42	45,0	m	12000	10210	9240	8420	7720	7120	6590	6000	6000	5590	5290	4900	kg																				
40	19,5	22	24	26	28	30	32	35,1	38,2	40,0	m	12000	10380	9390	8560	7850	7240	6710	6000	6000	5700	kg																								
35	19,8	22	24	26	28	30	32	34,5	m	12000	10650	9640	8790	8060	7440	6890	6300	kg																												
30	19,4	22	24	26	28	29,5	m	12000	10400	9410	8580	7870	7400	kg																																



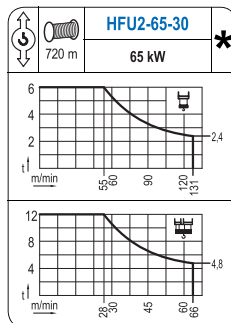
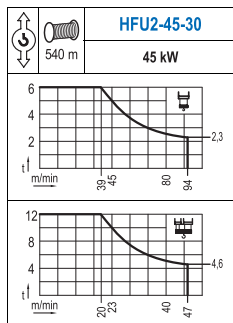
### Load Chart Powerlift / 载荷曲线 Powerlift


R (m)	HUU										H																																			
65	14,8	18	20	22	24	26	26,7	29,0	32	35	37	40	42	45	47	50	52	55	57	60	62	65,0	m	12000	9590	8470	7570	6820	6200	6000	6000	5380	4860	4570	4180	3950	3650	3470	3230	3080	2890	2770	2600	2500	2360	kg
60	16,5	18	20	22	24	26	28	29,7	32,4	35	37	40	42	45	47	50	52	55	57	60,0	m	12000	10840	9600	8590	7750	7050	6450	6000	6000	5500	5170	4740	4480	4140	3940	3670	3510	3290	3160	2970	kg				
55	18,3	20	22	24	26	28	30	32	33,1	36,2	40	42	45	47	50	52	55,0	m	12000	10850	9720	8790	8000	7340	6760	6260	6000	6000	5360	5080	4700	4470	4170	3990	3740	kg										
50	20,0	22	24	26	28	30	32	35	36,2	39,6	42	45	47	50,0	m	12000	10740	9720	8860	8130	7500	6950	6250	6000	6000	5610	5200	4950	4620	kg																
45	20,6	22	24	26	28	30	32	35	37,3	40,9	42	45,0	m	12000	11120	10070	9180	8430	7780	7210	6480	6000	6000	5820	5390	kg																				
40	20,9	22	24	26	28	30	32	35	37,9	39,6	40,0	m	12000	11340	10260	9360	8590	7930	7350	6610	6000	6000	6000	kg																						
35	21,5	24	26	28	30	32	34,5	m	12000	10560	9630	8840	8160	7570	6930	kg																														
30	21,0	24	26	28	29,5	m	12000	10330	9420	8650	8140	kg																																		




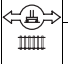
Valid data up to 100 m HUH. Additional heights on request.  
此数据仅适用于吊钩高度100m以下，其他高度请咨询。


### Mechanisms / 机构



	<b>TFU-7.5</b>
	<b>7,5 kW</b>
0 ⇔ 94 m/min	

	<b>SFU-7.5</b>
	<b>2x 7,5 kW</b>
0 ⇔ 0,7 rpm	

	<b>RT-7.5</b>
	<b>2x 75 Nm</b>
	20 m/min
	3XR52 5XR72

	<b>RT-7.5VC</b>	<b>*</b>
	<b>2x 75 Nm</b>	
	20 m/min	
	5XR72	

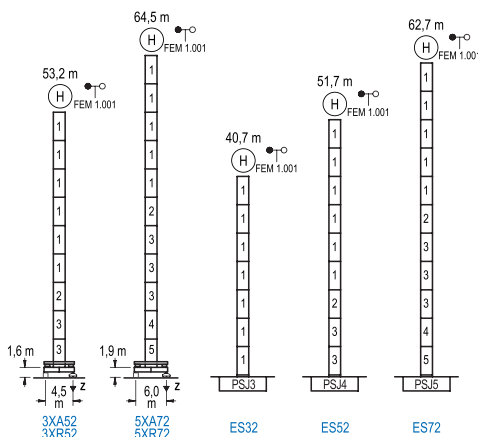
POWER / 功率				Operating voltage / 工作电压	Required power 需要功率
Hoist / 起升机构	Trolley / 变幅机构	Slewing / 回转机构	Travel / 行走机构		
HFU2-45-30	TFU-7.5	(2x) SFU-7.5	(2x) RT-7.5	400 V	126 kVA
HFU2-65-30				3ph 50 Hz	166 kVA

Optional 选项
<b>*</b>

Heights Under Hook / 吊钩以下高度

∅ 2,0 m

FEM 1.001



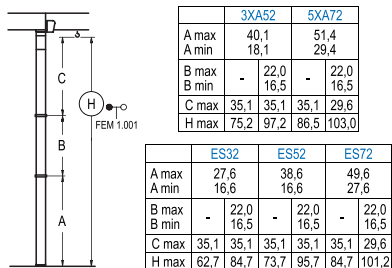
n°	Ref.	∅	h
1	SJ23	2,0	5,5
2	TSJ24	2,0	5,5
3	SJ24	2,0	5,5
4	TSJ25	2,0	5,5
5	SJ25	2,0	5,5

1xSJ25=1xSJ25M

<b>R max.</b> 最大压力	In operation 工作状态	3XR52.....95 t 5XR72.....87 t
	Out of service 非工作状态	3XR52.....100 t 5XR72.....135 t

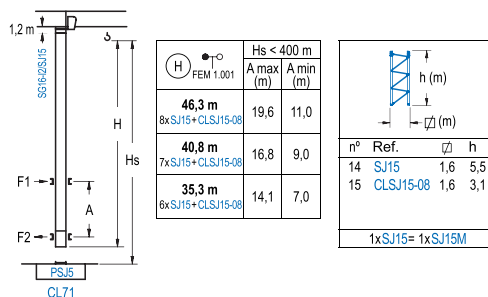
Braced crane / 外附着塔机

FEM 1.001



Internal Climbing Crane / 内爬塔机

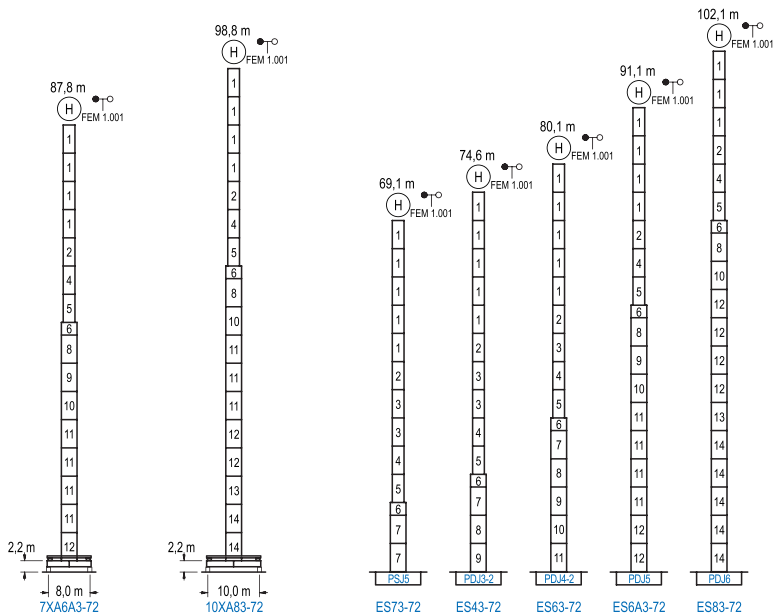
FEM 1.001



Other wind zones or additional hook heights on request  
其他风区或另外的吊钩高度请咨询

FEM 1.001

1600 Series



n°	Ref.	Ø	h	n°	Ref.	Ø	h	n°	Ref.	Ø	h	n°	Ref.	Ø	h
1	SJ23	2,0	5,5	4	TSJ25	2,0	5,5	7	SJ35	2,5	5,5	11	DJ34	2,5	5,5
2	TSJ24	2,0	5,5	5	SJ25	2,0	5,5	8	TDJ33A	2,5	5,5	12	DJ35	2,5	5,5
3	SJ24	2,0	5,5	6	TMSJ35SJ25	2,5	1,0	9	DJ33	2,5	5,5	13	TDJ36B	2,5	5,5
								10	TDJ34	2,5	5,5	14	DJ36	2,5	5,5
1xSJ25 = 1xSJ25M															

Other wind zones or additional hook heights on request  
其他风区或另外的吊钩高度请咨询