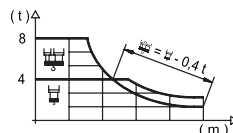


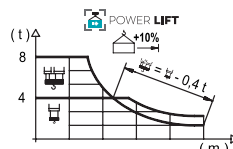
## Load Chart / 载荷曲线

R (m)	1100 Series																					
	13.8	15	20	24.7	26.8	28	30	32.5	35	37.5	40	42.5	45	47.5	50	52.5	55	57.5	60	62.5	65	m
65.0	8000	7250	5160	4000	4000	3800	3520	3210	2950	2730	2530	2350	2200	2060	1940	1830	1730	1630	1550	1470	1400	kg
62.5		8000	5720	4850	4000	4000	3890	3560	3270	3020	2810	2620	2450	2300	2160	2040	1930	1830	1740	1650	1500	kg
60.0			8000	6530	5540	5020	4380	4000	4000	3730	3450	3210	2990	2800	2630	2480	2340	2220	2100	2000		kg
57.5				8000	6800	5780	5240	4570	4000	4000	3890	3600	3350	3120	2930	2750	2590	2450	2320	2200		kg
55.0					8000	7020	5970	5410	4730	4350	4000	4000	3720	3460	3230	3030	2840	2680	2530	2400		kg
52.5						8000	6920	5880	5330	4660	4000	4000	3970	3670	3410	3190	2990	2810	2650	2500		kg
50.0							8000	7560	6430	5840	5110	4710	4350	4000	4000	3730	3490	3270	3070	2900		kg
47.5								8000	7490	6380	5790	5060	4660	4310	4000	4000	3700	3460	3240	3050		kg
45.0									8000	6780	6150	5390	4970	4600	4000	4000	3940	3680	3450			kg
42.5										8000	6810	6180	5410	4990	4620	4000	4000	3960	3700			kg
40.0											8000	6780	6160	5390	4970	4000	4000	3950	3700			kg
37.5												8000	6780	6160	5400	4970	4600	4000	4000			kg
35.0													8000	6870	6240	5470	5040	4660	4250			kg
32.5														8000	6870	6240	5460	5040	4650			kg
30.0															8000	6840	6210	5440	5100			kg



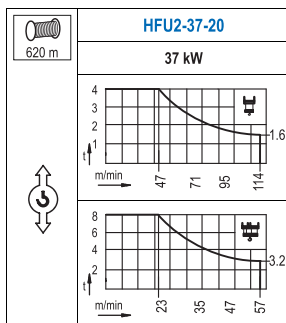
## Load Chart Powerlift / 载荷曲线 Powerlift

R (m)	Powerlift																					
	14.5	18	20	23	26.0	28.8	30	32.5	35	37.5	40	42.5	45	47.5	50	52.5	55	57.5	60	62.5	65	m
65.0	8000	6220	5500	4650	4000	4000	3830	3500	3210	2970	2760	2570	2400	2260	2120	2000	1890	1790	1700	1620	1540	kg
62.5		8000	6900	6110	5180	4680	4000	4000	3870	3561	3294	3060	2855	2673	2510	2364	2232	2112	2002	1902	1810	kg
60.0			8000	7010	5960	5410	4720	4350	4000	4000	3770	3510	3278	3072	2887	2722	2573	2437	2313	2200		kg
57.5				8000	7320	6230	5650	4940	4550	4000	4000	3940	3664	3423	3208	3017	2845	2690	2549	2420		kg
55.0					8000	7580	6450	5850	5120	4720	4280	4000	3790	3541	3320	3123	2946	2785	2640			kg
52.5						8000	7480	6370	5780	5050	4660	4280	4000	3743	3497	3279	3084	2908	2750			kg
50.0							8000	6980	6340	5560	5120	4660	4260	4000	3829	3592	3375	3200	3030			kg
47.5								8000	6920	6280	5500	5070	4610	4220	4000	3795	3560	3350				kg
45.0									8000	7360	6690	5870	5420	4930	4510	4150	4000	3790				kg
42.5										8000	7420	6740	5910	5460	4960	4540	4180	4000	3790			kg
40.0											8000	7390	6720	5890	5440	4940	4530	4000	3790			kg
37.5												8000	7400	6730	5900	5440	4950	4530	4230			kg
35.0													8000	7510	6820	5990	5520	5030	4670			kg
32.5														8000	7510	6830	5990	5530				kg
30.0															8000	7500	6820	5980	5610			kg



Valid data up to 100 m HUH. Additional heights on request.  
此数据仅适用于吊钩高度100m以下，其他高度请咨询。

## Mechanisms / 机构



	<b>TFU-4.0</b>
	<b>4 kW</b>
0 ⇔ 90 m/min	

	<b>SWR-7.5</b>
	<b>2x 75 Nm</b>
0 ⇔ 0,7 rpm	

	<b>RT2-5.5</b>	<b>RT-7.5</b>
	<b>2x 55 Nm</b>	<b>2x 75 Nm</b>
	20 m/min	
	1XR31 3XR51	5XR71

	<b>RT-7.5VC</b>	<b>*</b>
	<b>2x 75 Nm</b>	
	20 m/min	
	5XR71	

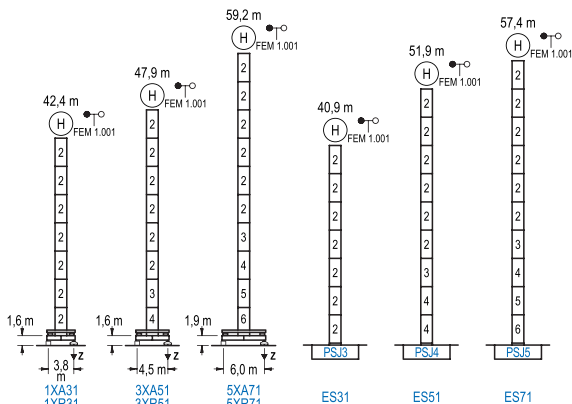
POWER / 功率				Operating voltage / 工作电压	Required power 需要功率
Hoist / 起升机构	Trolley / 变幅机构	Slewing / 回转机构	Travel / 行走机构		
HFU2-37-20	TFU-4.0	(2x) SWR-7.5	(2x) RT2-5.5 (2x) RT-7.5	400 V 3ph 50 Hz	110 kVA

Optional 选项
<b>*</b>

Heights Under Hook / 吊钩以下高度

∅ 1,6 m

FEM 1.001



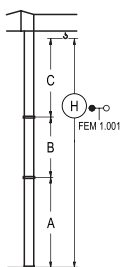
n°	Ref.	∅	h
2	SJ13	1,6	5,5
3	TSJ14	1,6	5,5
4	SJ14	1,6	5,5
5	TSJ15	1,6	5,5
6	SJ15	1,6	5,5

1xSJ13=1xSJ13M  
1xSJ15=1xSJ15M

R max. 最大压力	In operation 工作状态	1XR31.....73 t 3XR51.....71 t 5XR71.....77 t
	Out of service 非工作状态	1XR31.....71 t 3XR51.....78 t 5XR71.....110 t

Braced crane / 外附着塔机

FEM 1.001



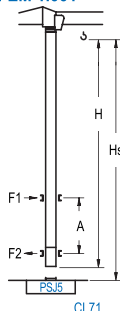
	1XA31	3XA51	5XA71
A max	29,1	34,6	45,9
A min	18,1	18,1	29,4
B max	22,0	22,0	22,0
B min	16,5	16,5	16,5
C max	35,3	35,3	35,3
C min	35,3	35,3	35,3
H max	64,4	86,4	69,9
		91,9	81,2
			103,2

	ES31	ES51	ES71
A max	27,6	38,6	44,1
A min	16,6	22,1	27,6
B max	22,0	22,0	22,0
B min	16,5	16,5	16,5
C max	35,3	35,3	35,3
C min	35,3	35,3	35,3
H max	62,9	84,9	73,9
		95,9	79,4
			101,4

Internal Climbing Crane / 内爬塔机

FEM 1.001



Hs < 400 m	A max (m) / A min (m)	
	43,9 m	16,8
38,4 m	14,1	9,0
32,9 m	11,4	7,0

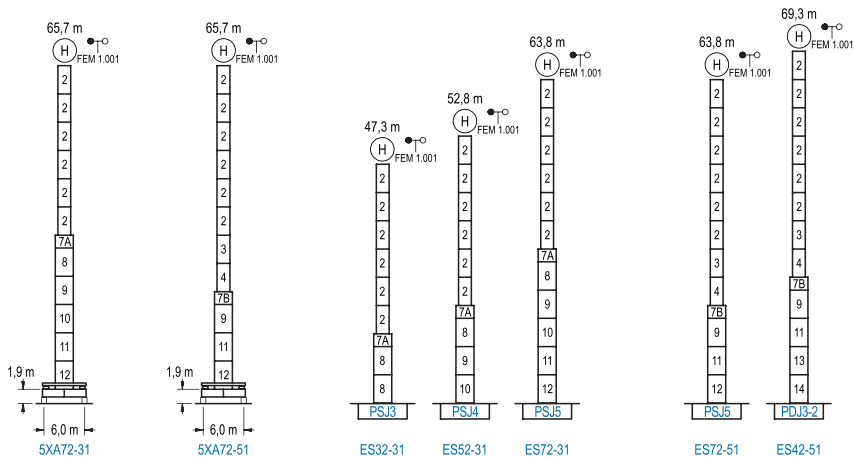
n°	Ref.	∅	h
2	SJ13	1,6	5,5
3	TSJ14	1,6	5,5
5	TSJ15	1,6	5,5
23	CLS15-08	1,6	3,1

1xSJ13=1xSJ13M

Other wind zones or additional hook heights on request  
其他风区或另外的吊钩高度请咨询

FEM 1.001

1100 Series



	n°	Ref.	z	h	n°	Ref.	z	h	n°	Ref.	z	h
	2	SJ13	1,6	5,5	7A	TMSJ23/PMSJ3	2,0	1,0	11	TSJ23	2,0	5,5
3	TSJ14	1,6	5,5	7B	TMSJ23/PMSJ4	2,0	1,0	12	SJ25	2,0	5,5	
4	SJ14	1,6	5,5	8	SJ23	2,0	5,5	13	TDJ23A	2,0	5,5	
5	TSJ15	1,6	5,5	9	TSJ24	2,0	5,5	14	DJ23	2,0	5,5	
6	SJ15	1,6	5,5	10	SJ24	2,0	5,5					
1xSJ13= 1xSJ13M								1xSJ25= 1xSJ25M				
1xSJ15= 1xSJ15M												

Other wind zones or additional hook heights on request  
其他风区或另外的吊钩高度请咨询