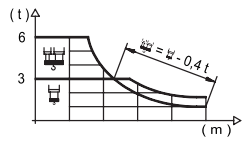


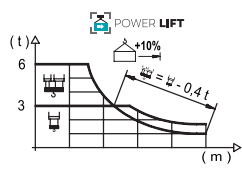
Load Chart / 载荷曲线

R (m)	1100 Series										1100 Series									
60.0	14.6 6000	17 4990	20 4090	23 3430	25.5 3000	28.4 3000	30 2810	32.5 2560	35 2350	37.5 2160	40 2000	42.5 1860	45 1730	47.5 1620	50 1520	52.5 1430	55 1340	57.5 1270	60.0 1200	m kg
57.5	15.6 6000	17 5430	20 4460	23 3760	25 3380	27.4 3000	30 3000	32.5 2790	35 2560	37.5 2360	40 2190	42.5 2040	45 1900	47.5 1780	50 1670	52.5 1570	55 1480	57.5 1400	m kg	
55.0	17.8 6000	20 5210	23 4400	25 3970	28 3450	30 3160	32 3000	34.9 3000	37.5 3000	40 2760	42.5 2560	45 2390	47.5 2230	50 2090	52.5 1970	55 1850	57.5 1750	m kg		
52.5	18.8 6000	20 5590	23 4730	25 4280	28 3720	30 3410	32 3140	34.9 3000	37.5 3000	40 2760	42.5 2570	45 2400	47.5 2250	50 2100	52.5 2000	55 1900	57.5 1800	m kg		
50.0	18.3 6000	20 5410	23 4570	25 4130	28 3590	30 3290	32 3000	34.9 3000	37.5 3000	40 2870	42.5 2670	45 2480	47.5 2320	50 2180	52.5 2050	55 1950	57.5 1850	m kg		
47.5	19.5 6000	23 4920	25 4450	28 3870	30 3550	32 3280	34.9 3000	37.5 3000	40 3000	42.5 2870	45 2680	47.5 2500	50 2350	52.5 2200	55 2100	57.5 2000	60.0 1900	m kg		
45.0	19.4 6000	23 4910	25 4440	28 3860	30 3540	32 3270	34.9 3000	37.5 3000	40 3000	42.5 2870	45 2680	47.5 2500	50 2350	52.5 2200	55 2100	57.5 2000	60.0 1900	m kg		
42.5	23.5 6000	25 5590	28 4880	30 4500	32 4160	35 3720	37 3470	40 3000	42.5 3000	45 2870	47.5 2680	50 2500	52.5 2350	55 2200	57.5 2100	60.0 2000	m kg			
40.0	23.3 6000	25 5520	28 4820	30 4440	32 4110	35 3680	37 3430	40 3000	42.5 3150	45 2870	47.5 2680	50 2500	52.5 2350	55 2200	57.5 2100	60.0 2000	m kg			
37.5	23.2 6000	25 5490	28 4800	30 4410	32 4080	35 3650	37 3400	40 3000	42.5 3150	45 2870	47.5 2680	50 2500	52.5 2350	55 2200	57.5 2100	60.0 2000	m kg			
35.0	22.9 6000	25 5400	28 4720	30 4340	32 4020	35 3650	37 3400	40 3000	42.5 3150	45 2870	47.5 2680	50 2500	52.5 2350	55 2200	57.5 2100	60.0 2000	m kg			
32.5	22.2 6000	25 5200	28 4540	30 4180	32 3850	35 3500	37 3250	40 3000	42.5 3150	45 2870	47.5 2680	50 2500	52.5 2350	55 2200	57.5 2100	60.0 2000	m kg			
30.0	21.9 6000	25 5140	28 4490	30 4200	32 3850	35 3500	37 3250	40 3000	42.5 3150	45 2870	47.5 2680	50 2500	52.5 2350	55 2200	57.5 2100	60.0 2000	m kg			



Load Chart Powerlift / 载荷曲线 Powerlift

R (m)	1100 Series										1100 Series									
60.0	15.3 6000	18 4930	20 4330	23 3640	25 3280	26.8 3000	30.5 3000	32.5 2780	35 2560	37.5 2360	40 2180	42.5 2030	45 1890	47.5 1770	50 1660	52.5 1560	55 1480	57.5 1400	60.0 1320	m kg
57.5	16.5 6000	18 5400	20 4760	23 4010	25 3610	28 3130	28.9 3000	32.9 3000	35 2800	37.5 2580	40 2390	42.5 2230	45 2080	47.5 1950	50 1830	52.5 1720	55 1630	57.5 1540	60.0 1460	m kg
55.0	18.8 6000	20 5570	23 4720	25 4260	28 3700	30 3400	32 3000	32.5 3070	33.1 3000	37.6 3000	40 2800	42.5 2610	45 2440	47.5 2290	50 2150	52.5 2030	55 1920	57.5 1820	60.0 1720	m kg
52.5	20.1 6000	23 5100	25 4620	28 4020	30 3690	32 3340	32.5 3000	35.3 3000	40.2 3000	41 2930	42.5 2820	45 2640	47.5 2480	50 2330	52.5 2200	55 2080	57.5 1960	60.0 1840	m kg	
50.0	19.6 6000	23 4950	25 4480	28 3900	30 3580	32 3220	32.5 3000	34.4 3000	39.0 3000	40 2920	42.5 2720	45 2550	47.5 2390	50 2250	52.5 2110	55 2000	57.5 1900	60.0 1800	m kg	
47.5	20.8 6000	23 5320	25 4820	28 4200	30 3860	32 3490	32.5 3180	35 3000	36.6 3000	41.7 3000	42.5 2930	45 2750	47.5 2580	50 2430	52.5 2290	55 2160	57.5 2030	60.0 1900	m kg	
45.0	20.8 6000	23 5320	25 4820	28 4200	30 3860	32 3490	32.5 3180	35 3000	36.6 3000	41.7 3000	42.5 2930	45 2750	47.5 2580	50 2430	52.5 2290	55 2160	57.5 2030	60.0 1900	m kg	
42.5	25.3 6000	28 5330	30 4910	32 4460	35 4080	37.5 3740	40 3460	42.1 3240	45 3000	47.5 2750	50 2550	52.5 2390	55 2250	57.5 2110	60.0 2000	m kg				
40.0	25.1 6000	28 5270	30 4860	32 4410	35 4030	37.5 3700	40 3460	42.1 3240	45 3000	47.5 2750	50 2550	52.5 2390	55 2250	57.5 2110	60.0 2000	m kg				
37.5	25.0 6000	28 5250	30 4840	32 4400	35 4020	37.5 3740	40 3460	42.1 3240	45 3000	47.5 2750	50 2550	52.5 2390	55 2250	57.5 2110	60.0 2000	m kg				
35.0	24.7 6000	28 5190	30 4780	32 4340	35 4020	37.5 3740	40 3460	42.1 3240	45 3000	47.5 2750	50 2550	52.5 2390	55 2250	57.5 2110	60.0 2000	m kg				
32.5	23.9 6000	28 4990	30 4590	32 4230	35 3850	37.5 3500	40 3250	42.1 3000	45 2870	47.5 2680	50 2500	52.5 2350	55 2200	57.5 2100	60.0 2000	m kg				
30.0	23.7 6000	28 4940	30 4490	32 4200	35 3850	37.5 3500	40 3250	42.1 3000	45 2870	47.5 2680	50 2500	52.5 2350	55 2200	57.5 2100	60.0 2000	m kg				



Valid data up to 100 m HUH. Additional heights on request.  
此数据仅适用于吊钩高度100m 以下，其他高度请咨询。

Mechanisms / 机构

440 m

**HFU2-24-15**

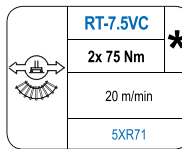
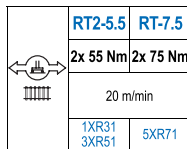
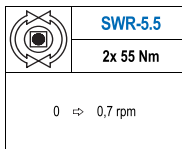
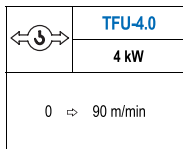
24 kW

3  
2  
1  
0  
m/min

41 60 80 96  
kg

6  
4  
2  
0  
m/min

21 30 40 49  
kg



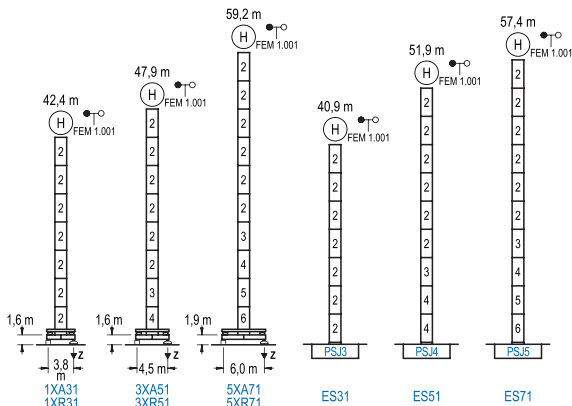
POWER / 功率				Operating voltage / 工作电压	Required power 需要功率
Hoist / 起升机构	Trolley / 变幅机构	Slewing / 回转机构	Travel / 行走机构		
HFU2-24-15	TFU-4.0	(2x) SWR-5.5	(2x) RT2-5.5 (2x) RT-7.5	400 V 3ph 50 Hz	72 kVA

Optional  
选项  
\*

Heights Under Hook / 吊钩以下高度

∅ 1.6 m

FEM 1.001



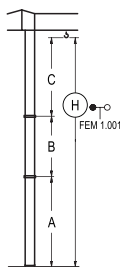
n°	Ref.	∅	h
2	SJ13	1.6	5.5
3	TSJ14	1.6	5.5
4	SJ14	1.6	5.5
5	TSJ15	1.6	5.5
6	SJ15	1.6	5.5

1x SJ13 = 1x SJ13M  
1x SJ15 = 1x SJ15M

R max. 最大压力	In operation 工作状态	1XR31.....72 t 3XR51.....69 t 5XR71.....74 t
	Out of service 非工作状态	1XR31.....84 t 3XR51.....93 t 5XR71.....110 t

Braced crane / 外附着塔机

FEM 1.001



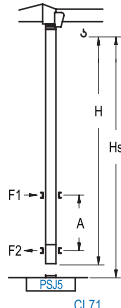
	1XA31	3XA51	5XA71
A max	29,1	34,6	45,9
A min	18,1	18,1	29,4
B max	-	22,0	-
B min	-	16,5	-
C max	35,3	35,3	35,3
C min	64,4	86,4	103,2

	ES31	ES51	ES71
A max	27,6	38,6	44,1
A min	16,6	22,1	27,6
B max	-	22,0	-
B min	-	16,5	-
C max	35,3	35,3	35,3
C min	62,9	84,9	101,4

Internal Climbing Crane / 内爬塔机

FEM 1.001

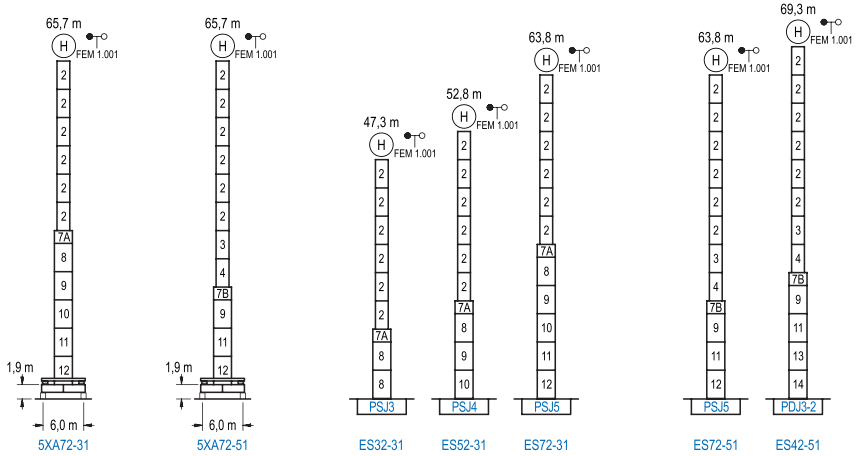


Hs < 400 m FEM 1.001	A max (m)	A min (m)
	43,9 m SJ13+ 5x SJ13+ TSJ14+ TSJ15+ CLSJ15-08	16,8
38,4 m SJ13+ 4x SJ13+ TSJ14+ TSJ15+ CLSJ15-08	14,1	9,0
32,9 m SJ13+ 3x SJ13+ TSJ14+ TSJ15+ CLSJ15-08	11,4	7,0

n°	Ref.	∅	h
2	SJ13	1.6	5.5
3	TSJ14	1.6	5.5
5	TSJ15	1.6	5.5
23	CLSJ15-08	1.6	3.1

Other wind zones or additional hook heights on request  
其他风区或另外的吊钩高度请咨询

FEM 1.001



n°	Ref.	h	h	n°	Ref.	h	h	n°	Ref.	h	h
2	SJ13	1,6	5,5	7A	TMSJ23/PMSJ3	2,0	1,0	8	SJ23	2,0	5,5
3	TSJ14	1,6	5,5	7B	TMSJ23/PMSJ4	2,0	1,0	9	TSJ24	2,0	5,5
4	SJ14	1,6	5,5					10	SJ24	2,0	5,5
5	TSJ15	1,6	5,5					11	TSJ25	2,0	5,5
6	SJ15	1,6	5,5					12	SJ25	2,0	5,5
	1xSJ13= 1xSJ13M							13	TDJ23A	2,0	5,5
	1xSJ15= 1xSJ15M							14	DJ23	2,0	5,5
									1xSJ25= 1xSJ25M		

Other wind zones or additional hook heights on request  
其他风区或另外的吊钩高度请咨询